

119

RbC

**riverbed
concrete**



stain & seal concrete flooring

As Seen On:



Stain and Seal Concrete Flooring: Riverbed Concrete Inc. stained concrete flooring penetrates and permanently stains new or existing concrete, producing unique, permanent color for interior/exterior concrete surfaces. Riverbed Concrete Inc. offers a wide variety of colorant choices which will add beautiful, translucent color to your commercial or residential concrete flooring.

Flooring Type: Interior Stain and Seal
Concrete Flooring
Color: Bronze



Indoor Stain & Seal Flooring

Indoor Stain & Seal Flooring



Description:
Color: Mahogany



Description:
Color: Vintage Umber



Description:
Color: Cola



Description:
Color: Cocoa



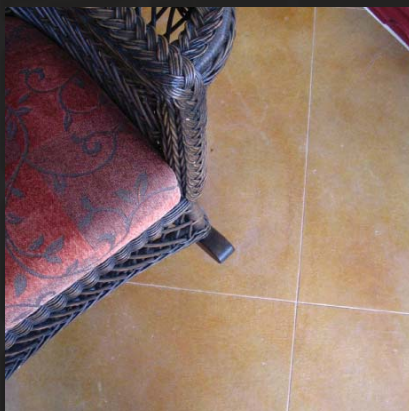
Description:
Color: Vintage Umber



Description:
Color: Vintage Umber



Description:
Color: Maylay Tan



Description:
Color: Golden Wheat



Description:
Color: Cola

Concrete : Exterior Stain and Seal
Concrete
Color: Bronze

Outdoor Stain & Seal Flooring

Outdoor Stain & Seal Flooring



Description:
Color: Vintage Umber
Texture: Salt Rock



Description:
Color: Mahogany
Texture: Salt Rock



Description:
Color: Cola
Texture: Salt Rock



Description:
Color: Golden Wheat
Texture: Troweled



Description:
Color: Malay Tan
Texture: Troweled



Description:
Color: Mahogany
Texture: Salt Rock



Description:
Color: Bronze
Texture: Salt Rock



Description:
Color: Golden Wheat
Texture: Salt Rock



Description:
Color: Cola
Texture: Salt Rock

OPTIONS WORKSHEET

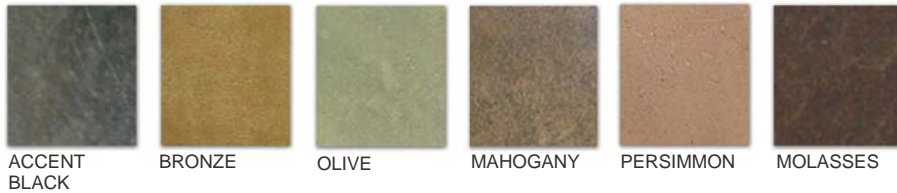
(ALL OPTIONS BELOW CAN BE MIXED AND MATCHED)

DESIGN COLORS

ACID STAIN - interior / exterior stain and seal



SIM STAIN - interior / exterior stain and seal



DYE (INTERIOR ONLY) - interior stain and seal / polished concrete



STAIN AND SEAL CONCRETE FLOORING OPTIONS



TILE SCORING



STENCILING



DESIGN SCORING



BORDERS

STAIN AND SEAL CONCRETE FLOORING MAINTENANCE PRODUCTS



General Cleaner



Floor Finish

210.845.2008 | Direct 830.981.2210 | Office 830.755.6055 | Fax info@riverbedconcrete.com | email

www.riverbedconcrete.com
39390 W IH 10 #C | Boerne TX, 78006

Showroom by Appointment

Riverbed Concrete Inc. Quote Requests

The quoting process is quick and easy. Fill out the form and fax it along with a drawing of your project. Be sure to give us your email address or fax number so a quote can be sent to you. Quotes usually take up to 24 hours to complete. Please call us if you have any questions along the way. 210.845.2008

Quote Request Form (Interior/Exterior Concrete Flooring)

Name: _____ Physical Address: _____

Project Name: _____

Phone Number: _____

Email Address: _____ Desired Start Date: _____

Contact Information For Designer, Architect or Builder If Applicable: _____

Select a Service

Flooring Type: Traditional Sealed / Diamond Polished / Overlay / Maintenance Wax

Areas of Work: As per drawings _ or _ List project area (ie. Kitchen, foyer, front patio, etc.): _____

New Construction / Remodel Interior / Exterior Square Footage: _____

If remodel, specify existing flooring material:
(tile, industrial carpet, residential carpet, hardwood, linoleum): other _____

Colorant: (Acid Stain, SIM Stain, Dye) Color: _____

Scoring Pattern: (12" , 24" , 32-36" , 42") other: _____

Stencil Pattern: _____ (modellodesigns.com – Graphetto.com)

Description:

Special Features: _____

Standard lead time is 3-4 weeks after all information and deposits are collected.

For rush orders of 2 weeks or less, add 25%.

Please fax this form along with a drawing of the project to 830.755.6055



39390 W IH-10 #C, Boerne Tx 78006

Phone: 210.845.2008

Fax: 830.755.6055

info@riverbedconcrete.com

www.riverbedconcrete.com

also available from **riverbed concrete**.....



Commercial Polished Concrete Flooring



Exterior Stained and Sealed Concrete



Slick Rock Tiles



Landscape Basins and Fire Bowls



Interior Residential Stained and Sealed Concrete Flooring



Interior Commercial Stained and Sealed Concrete Flooring



Precast Concrete Counters



Precast Concrete Sinks



Showroom by Appointment

210.845.2008 | Direct

830.981.2210 | Office

830.755.6055 | Fax

info@riverbedconcrete.com | email

www.riverbedconcrete.com

39390 W IH 10 #C | Boerne TX, 78006

Showroom by Appointment