



GC Checklist

The following qualifications should be addressed prior to and after the installation of Riverbed Concrete Inc. decorative concrete flooring. If any of the below requirements cannot be met, for any reason, please contact Riverbed Concrete Inc. @ 210.845.2008 to discuss other alternatives.

Pre-Qualifications:

1. All paperwork, including approved work order estimates and RBC contracts should be turned in to RBC prior to the job start date. If the terms of the estimate define a 50/50 payment term, the down payment should be received by RBC prior to the start date.
2. Work should be scheduled after framing and before sheetrock for polished concrete flooring. Work should be scheduled after sheetrock and before paint and base board for stained and sealed concrete flooring.
3. Riverbed Concrete Inc. is routinely booked in advance with other clients up to 30 days. Please schedule your project start date early to help guarantee your desired start date and prevent project delays.
4. Concrete should be poured to the flatness and levelness ratings as indicated in the spec sheet and if a curing compound is desired, the Cure R (resin based) or similar product should be used as in the spec sheet.

Job-site/Work-site Qualifications:

1. Worksite should be free from all construction debris prior to RBC's arrival.
2. Worksite should be swept and generally in "clean" condition.
3. Worksite should be clear of ALL other trades and workers. RBC must have sole access to its work areas.
4. Jobsite should provide access for (1) truck and (1) 24' trailer to safely back-up to a loading/landing area to adequately unload (3) 1400lbs. machines from a trailer door ramp.
5. Jobsite should provide access for (1) truck and (1) 12' trailer with attached 35KW generator, which will provide the power for our 220V and 110V requirements.
6. Jobsite should provide reasonable access to water. If water is not available on-site or water is located in an area inaccessible to wheeled carriers, water may be made available by RBC. RBC's provision of its own water source to the jobsite may add a reasonable fee for transportation and set-up.
7. GC should arrange with RBC to coordinate with the owner, representative, or qualified project manager to be onsite the morning of the start date to approve color and finish samples. (We generally ask that samples be approved by 10am the day of the project start date.)

Post Qualifications

1. All hydraulic lifts should be diapered to prevent oil stains.
2. If you decide to cover the final polished concrete flooring, do so with a breathable covering. I.e. Cardboard, construction paper, etc. DO NOT COVER WITH PLASTIC.
3. DO NOT allow acids to come in contact with the polished concrete
4. DO use a neutral pH cleaner for the final clean of the floor surface
5. (Polished concrete only) If there are white blemishes on the finished floor use a green or black scrubbing pad affixed to a buffing machine or auto scrubber to remove.

I, _____ have read and am aware of the requests made by Riverbed Concrete Inc. for the above qualifications, and that the provision of these qualifications will help to ensure a successful installation. Delays resulting from the not executing the above qualifications will result in hourly penalties of \$120.00/hour.



**RIVERBED CONCRETE:
IMPORTANT INSTRUCTIONS AND CLIENT AGREEMENT FOR STAINED CONCRETE**

The final result of any stained floor is determined primarily on the quality of the pour and the ongoing protection of the slab during construction. The Builder is responsible for relaying the following important information to the concrete contractor and all other sub contractors involved. COMMUNICATION is vital for the success of this project.

INTERIOR CONCRETE / EXTERIOR CONCRETE:

1. A quality batch of concrete should consist of standard 5-sack mixture with no additives, fillers or curing agents (no fly-ash, retarders, or chloride accelerators). We encourage a smooth hard, MACHINE troweled finish for interior surfaces, all the way to the edges of the slab; swirls from troweling add beauty to the floor. Exterior concrete may have either a light broom or salt finish.
2. It is important that the concrete be thoroughly finished with hand tools around plumbing, risers, floor outlets, or any other element, which is not accessible to the machine.
3. Please refrain from using silicone chinks; the red and yellow chinks consist of permanent dyes that will negatively affect the final outcome of the project. Try not to over mark for framing, or use silicone or other sprays to "hold" lines. (The sprays repel the stains and leave harsh scars in the final floor).
4. It is imperative that wood, sheet goods, sections of framing and the like not lay on the slab for long periods of time. They can transfer resins and tannins that can alter the moisture content in the slab and leaves a permanent likeness in the finished floor.

The floor should be protected from the following:

RED CHALK	MARKERS	COFFEE
FOAM INSULATION	SPRAY PAINTS	METAL NAILS/RUST
CURING COMPOUND	CRAYONS	FOOD
OILS	MURATIC ACID	GREASE
GREASE	PAINT	COKE
POLYURETHANE	PVC PRIMER/CLEANER	LUMBER, SAW DUST, BOARDS, ETC.
ADHESIVE	DIESEL	STAIN
FLUX	WAX PENCIL	PAINT
GAS	PRIMER	

The above chemicals prevent the floor stains from penetrating. Muratic acid should never be used on concrete.

5. The framers should brace the wall to the outside and not the slab. The doorplates should be cut away immediately.
6. The floors should be clean and the rooms empty of debris before our crew arrives. Our price does not include; removing paper, moving furniture, tools, equipment, fixtures, building materials or otherwise. There should be no other trades on the floors or scheduled at the same time as Riverbed Concrete.



Riverbed Concrete will require sole access to the contracted application area, unless otherwise approved. Riverbed Concrete will not be held liable for outcomes resulting from damages subjected to the work area prior to or after the contracted dates. Riverbed Concrete will not be held liable for any damage caused by trades or other traffic during the contracted period.

7. We make every effort to provide beautiful and cost effective floors. Our fees do not include:

Post construction cleaning, sealing, waxing, protective covering, or any other service not itemized in the bid. Our fees are based on square footage. We measure wall to wall, we do not credit for cabinets, built-ins etc. This is the industry standard.

7a. All prices, unless otherwise specified are for stained concrete flooring to be scheduled after sheetrock, but before paint and baseboards or any other point in construction when tape and paper protection is not required to protect finished interior or exterior materials/items. If it is necessary to tape and paper, an added fee of no less than \$.30/sq.ft. will be added to the final invoice.

8. It is important that you do not apply tape directly to the floor. When covering the flooring, overlap sheets of builder's paper; first by taping directly to the wall then overlap the additional sheets to the original piece. This is IMPAIRATIVE; the tape alters the curing process and transfers chemicals to the slab and will show in the finished product. (Duck tape masking tape, packing tape, blue tape, green tape, and electrical tape, are not to be used. When covering the floor, you may use sheets of masonite or cardboard, on top of builders paper. Do not cover the slab with plastic at any time. It interferes with the curing process of the slab, and causes efflorescence. Riverbed Concrete is not responsible for moisture or related concerns.

9. There must be two 110 volt outlets on two separate 20 amp breakers not more than 150 feet from the furthest point of the slab available to our crew. Running water also needs to be available, and trash receptacles. Sufficient ventilation, water sources, power sources, and lighting will be provided by the second party. If either of these site conditions are not adequate or become compromised during the contracted period, the completion date will be altered to Riverbed Concrete's desired date. Overtime rates will become applicable upon said circumstance.

10. Acid stains are chemical metallic salts, which seek out and react with the lime in the concrete. They can be manipulated, but not controlled and anticipated, but not guaranteed. Our color chart shows color reactions, but every slab is different. All elements and conditions affect the outcome of the floors. Exact colors and stain patterns cannot be achieved, it is important that all parties understand this.

10a. It has been explained to the second party that acid stains have a chemical reaction with the concrete to be stained. These reactions are often unpredictable and unique to each individual slab. The desirable, non uniform nature of acid stains are referred to as color modeling and can be experienced for a variety of reasons and expressed in a variety of forms. Color modeling is very common when using acid stains, and should be anticipated by the second party. The quality and condition of the slab to be stained is not the responsibility of Riverbed Concrete.

How Acid Stains Work- Acid stains, which are metallic salts in an acidic, water based solution, react with hydrated lime in hardened concrete to yield insoluble colored compounds that become a permanent part of the concrete surface. The acid in chemical stains etche the surface allowing the metallic salts to reach and react with free lime deposits. Chemically altered dense surfaces, caused by hardeners, densifiers, or curing compounds can prevent the stain from adequately penetrating the slab surface, resulting in an excessively modeled appearance.



10b. SIM Stain is an alternative to acid based concrete stains, providing color by penetrating the surface of the concrete and are locked” into place utilizing a modified acrylic compound. SIM Stains are water-based and are environmentally friendly colorants which contain a low VOC content. There is no chemical reaction as with typical acid stains. This allows for an expanded color palette unattainable with acid stains, and increased color predictability. The penetration depth of SIM Stain is comparable to acid stain and results in similar wear ability. SIM Stains can be chosen for interior or exterior use. Unlike acid stains, Blues and Greens may be chosen for exterior use.

10c. Concrete dyes are translucent, penetrating color solutions suspended in either a water or solvent solution. Unlike acid stains they do not react chemically with concrete. Instead, they contain very fine coloring agents that penetrate into the concrete surface. These extra fine coloring agents work well for diamond polished concrete for their ability to penetrate tight concrete surfaces. Dyes may also be used for any tradition interior concrete flooring application (hand or machine trowel), and exhibit a wide range of available colors that can be mixed to create custom hues. Concrete dyes are **not** UV stable thus making them unsuitable for exterior application.

Drying periods:

Stain- 12 hrs.

Sealer- 72 hrs.

Cleansing- 12 hrs.

11. Overlay products are hand applied. It is inherent in the material that ridges, trowel marks, “skip” trowling, burning, height variations, and material thicknesses are to be expected. The finished re-surfacing produced by overlay products typically resembles that of a plastered wall, leather, or a similarly textured surface. The textured surface greatly is affected by the substrate which may show through in the final product. When re-surfacing entire areas, it is expected that the installer may miss filling in small areas along walls, corners, cabinets, or similar obstructions.

12. The customer is aware that a degree of inconsistencies and defects will be present in the final product. Stained and sealed concrete flooring systems are hand applied by trained artisans. Stained flooring is an artistic application with each project exhibiting its own unique nuances dictated by conditions, application methods, on-site variables, material variables, craftsmanship, and available time frame. Variances in texture, color, sealer, gloss, and relative smoothness are to be expected.

13. A change order contingency of 20%, added to the project total will be charged for any alteration requests made after the signing of this contract. This document and any written attachments constitute the entire agreement between the Parties. Rates for overtime caused by an agreed upon alteration of work schedule. Additional Fee: \$ 300.00 / day.

14. Riverbed Concrete Inc. takes all necessary precautions and measures to ensure and improve onsite conditions they arise. All processes and procedures are variable, requiring onsite, immediate decisions. All processes and procedures are considered a creative, artistic expression. Amounts up to 20% of the estimate total may become applicable to cover added work without a written change order and invoiced separately from the estimate. Any and all added charges over the estimate total will abide, or be directed by, the current Riverbed Concrete Inc. rates and charges price list, unless otherwise agreed in writing. With the variables in decorative concrete flooring, the client is contracting for expertise in creative, problem solving solutions to onsite variability, as no two jobs are alike, and every project presents hidden challenges that can not be fully foreseen until work begins.

15. To insure proper scheduling, please contact us at least 3 weeks in advance. We work very hard to accommodate most schedules. Please assist us by communicating your project status and any questions



or concerns you may have. We are committed to the outcome of the project. We appreciate that you are too.

16. Floor maintenance is the sole responsibility of the second party. We suggest the application of wax as a sacrificial barrier between abrasion and the finished floor. For everyday cleaning the use of a mild detergent soap is recommended. Common kitchen floor cleaners are suitable as well. Refrain from using acidic cleaners or strippers such as muratic, sulfamic, or orange concentrate cleaners. Do not use wet swiffer type mops.

a.) In high traffic situations, resealing the concrete may become necessary to protect the acid stain. This should be performed by Riverbed Concrete and will be invoiced separately.

17. A design fee of \$50.00 / hr. will be applied for requests of Riverbed Concrete Inc. to assist the homeowner, builder, carpenter, or similar in the layout, function, construction, and specific, overall or general design of a project.

18. In consideration of the mutual promises set forth herein, Riverbed Concrete covenants and agrees that it shall perform services rendered in a timely, professional manner, providing quality results set to Riverbed Concrete standards. Riverbed Concrete is not liable for color or texture inconsistencies, nor to be held responsible for differences in opinion of color tone, color modeling, texture, or other disagreements and opinions of color or texture. All verbal agreements are void unless otherwise stated in this contract.

Any claim or controversy arising among or between the parties hereto and any claim or controversy arising out of or respecting any matter contained in this Agreement or any difference as to the interpretation of any of the provisions of this Agreement shall be settled by arbitration in the city of Boerne, Texas by Three (3) arbitrators under the then prevailing rules of the American Arbitration Association.

In any arbitration involving this Agreement, the arbitrators shall not make any award which will alter, change, cancel or rescind any provision of the Agreement and their award shall be consistent with the provisions of this Agreement. Any such arbitration must be commenced no later than sixty (60) days from the date such claim or controversy arose. The award of the arbitrators shall be final and binding.

(Signature)

(Printed Name)

Dated: _____, 20_____

Owner's Manual

Protecting your stained concrete flooring

Stained concrete floors are tough and durable but are not impervious to wear and tear. General care and maintenance should be observed to ensure your investment looks and performs great for many years.

Plastic glides, felt pads or Magic Movers should be affixed to heavy furnishings or those which will move frequently. Use the same precautions you would use for a hard wood floor. A door mat at the outside (Hemp or Rope style) and inside entrance (one with a perforated, breathable back and that is not made from rubber or plastic) of a home will pick up over 85% of the dirt that would otherwise be tracked inside.

One important thing to mention about your walk-off mat is how to choose one. For the first month, an open-back mat such as a carpet remnant should be used while the sealer/finish cures. Plastic-backed products should NOT be used for your mats. An acrylic, rubber, or plastic backed mat can cause discoloration or sealer failure under and around the mat.

Cleaning your stained concrete flooring

Daily Maintenance

- Dust Mop Regularly - This will remove the fine dust and grit which can grind away floor finish (Sealer and/or Wax). This practice will help prevent major floor finish deterioration caused by normal foot traffic. The best results are obtained by using a Micro-Fiber Dust Mop.
- NEVER use a "Swiffer Wet-Jet" type of cleaning tool. The liquid in these devices contain trace amounts of Solvent material. The Solvent will harm the sealer. Also, you should not use Ammonia, Bleach or Pine Sol.

Damp mopping - use cool water

- Damp mopping with cool water and **Riverbed Concrete's General Cleaner** (a neutral pH cleaner) will protect the floor finish. It will not dull the finish and will enhance the gloss retention. (See below for General Cleaner specifications and additional information.)
- Follow the recommended dilution rates on label directions.
- The mop should be wrung out tightly so that it is just damp. Do not allow the cleaning solution to puddle.

Waxing and sealing your stained concrete flooring

Wax is an optional sacrificial coating which when applied correctly can protect the sealer, and bear the brunt of the scuff and scratches. An optional coating of **Riverbed Concrete's Floor Finish** may be requested by the customer and will be itemized as an additional coating on the final invoice. (See below for Floor Finish specifications and additional information.) Riverbed Concrete Floor Finish may also be applied in a DIY fashion by the owner. See below for further details.

- Re-waxing depends on the traffic and abuse subjected to the floor. It varies by owner and application (commercial/residential) and may be anywhere from:
 - High Traffic Areas: Every 4-5 weeks
 - Moderate Traffic Areas: Quarterly – Semi Annually
 - Low Traffic and/or Edges: Annual or greater

Neutral Cleaner / Wax: Troubleshooting

Problem	Probable Cause	Solution
Floor is Streaky.	Floor was still dirty before mopping	Allow floor to dry and dust mop
Footprints at entrance area.	Dirty Walk-Off Mat(s).	Shake/Clean walk-off mats.
Floor is Spotty.	Too much solution water remained on floor.	Water solution shouldn't puddle. Use a <u>damp</u> mop so liquid will not stand on floor.
Floor is Sticky.	Too much cleaner solution in water.	Re-mop floor with clean water to remove excess cleaner. Sample solution ratio: Use 1 OZ of solution to 1 Gal of clean water.
Floor has a Milky White Spot	Something wet remained on the floor causing the acrylic in the sealer/wax to discolor.	Wipe up any remaining liquid and allow floor to dry. Once dry, the Milky spot will fade.

***Don't forget to rinse & clean the mop & bucket after use. Shake or brush off dust mop before using.

Cleaning Methods

Do NOT use:

- High pressure washer equipment
- High alkaline cleaners, degreasers, or strippers
- Solvent cleaners
- Floor pads: green, brown, or black (noted for commercial cleaners)
- Nylo-grit or Strata-Grit rotary brushes (noted for commercial cleaners)
- Apply tape of any kind directly to the concrete surface.

Sealer Damage

If gouging or other damage occurs, spot retouching can repair the problem area/s. If retouching is required please contact Riverbed Concrete (830.981.2210).

- It is recommended that all necessary maintenance or repairs be performed immediately. Exposure of unprotected, damaged sealer will leave the floor vulnerable to further damage or wear. This may become irreversible.
- Wearing off the sealer will expose the stained floor making it vulnerable to damage. To protect the finished concrete and stain color, a properly functioning top coat of sealer/wax must be maintained. If any bare concrete is noticed please contact Riverbed Concrete to schedule a re-coating of sealer or wax.

*Please Note: The maintenance instructions below are intended for reference purposes only. Always test a small area to ensure your products and systems are compatible with the installed Decorative concrete system. Ensure all sealers and coatings are fully cured before the application of any maintenance products.



GENERAL WARRANTY

Riverbed Concrete Inc., does hereby guarantee and warrant all work performed by Riverbed Concrete Inc. on the above referenced project for a period of one (1) year from substantial completion of contracted work. This warranty provides that all materials and equipment furnished under the contract is of good quality and new. The work will be free from defects excluding what is inherent in the nature of the product or permitted in Riverbed Concrete Inc. allowable tolerance, and the work will conform to the requirements of the contract documents.

This warranty excludes failures caused by occurrences beyond Riverbed Concrete Inc's control including, but not limited to, acts of God or public enemy, acts of war, rebellion or sabotage: fires, floods, explosions, accidents: riots or other acts of workers, whether direct or indirect: or, any other causes whether or not of the same cause or kind as those specifically named above, which are not within the control of the party affected and which, by the exercise of reasonable diligence, said party is unable to prevent or provide against.

Riverbed Concrete Inc. does not warrant for negligent use of its installed/manufactured products. Strict adherence to Riverbed Concrete Inc. documents, contracts, agreements, instruction, care & maintenance, and all expressed information must be adhered to for compliance with warranty terms.

Riverbed Concrete Inc. general warranty is considered void if cleaning products outside of the Riverbed product line are used (unless under prior written approval).

Amendments to warranty:

Signed: _____ Date: _____
(Signature only required if amendments present)

Floor Finish

Riverbed Concrete Floor Finish is formulated for use on stain & seal concrete flooring. It contains 20% solids to provide an exceptionally durable, high gloss shine, while resisting scuff, heal marks, and slips. Riverbed Concrete Floor Finish performs well with stained and sealed concrete flooring and will provide lasting, low maintenance protection.



Instructions for Use:

Preparation: Sweep or vacuum to remove loose materials from surface.

Equipment: Apply w dry rayon string or micro fiber mop.

Storage and Handling: Store in cool dry place. Do not alter or mix with other chemicals.

Application: Always test for suitability and desired results before overall application. Pour into a clean bucket. Using a dry mop apply 1-4 coats of finish. To achieve a thin, even coat, move the mop in continuous figure eight motion. Allow floor to dry completely between coats to prevent hazing and to ensure adhesion. Approximately 30 minutes under normal conditions. Do not use fans to reduce drying time. Maintain floor by frequent dry dust mopping and daily damp mopping with Riverbed Concrete General Cleaner to provide a long lasting, clear gloss finish. To periodically rejuvenate the gloss, spray buff floor while using a low speed buffing machine with a red pad, or a high speed burnisher with a natural or beige pad.

Safety Info: Contains Glycol Ethers. Harmful if swallowed. Avoid eye and skin contact. Wear protective equipment as necessary to avoid contact. Do not alter or use for other than specified. **First Aid:** Ingestion: do not induce vomiting. Get immediate medical assistance. Eye Contact: Rinse thoroughly for 15 min. Get medical assistance. Skin contact: Rinse thoroughly. Get medical attention if irritation persists. Inhalation: Remove to fresh air. Get medical attention as necessary. 24 Hour emergency: INFOTRAC, 800.535.5053. Complete product literature by Riverbed Concrete Inc. 830.981.2210. Refer to product data and MSDS for complete application and precautionary information.

General Cleaner

Riverbed Concrete General Cleaner is an all purpose cleaner for polished concrete flooring, stain and seal concrete flooring, concrete counters/sinks/tiles, and other pre-cast concrete features. It's neutral formula contains low residue, which rinses clean and is specifically designed for use on decorative concrete surfaces.



Instructions for Use:

Preparation: Sweep or vacuum to remove loose materials from surface.

Equipment: Apply w mop, autoscrubber, or rag.

Storage and Handling: Store in cool dry place. Do not alter or mix with other chemicals.

Application: Always test for suitability, dilution rates and desired results before overall application. Dilution: Normal clean-1 oz of cleaner/1 gal fresh water ; Deep clean-2oz of cleaner/1 gal fresh water.

Application Instruction: Apply with mop or autoscrubber. Mop up used cleaner or vacuum with autoscrubber. After deep clean rinse well with fresh water. Do not let puddles dry on the concrete surface. Buff with White pad to increase shine.

Clean Up: Clean tools and equipment w fresh water.

Safety Info: Contains Octyldimethylamine oxide, decyldimethylamine oxide. Causes eye and skin irritation. Harmful if swallowed. Avoid eye and skin contact. Wear protective equipment as necessary to avoid contact. Do not alter or use for other than specified. First Aid: Ingestion: do not induce vomiting. Get immediate medical assistance. Eye Contact: Rinse thoroughly for 15 min. Get medical assistance. Skin contact: Rinse thoroughly. Get medical attention if irritation persists. Inhalation: Remove to fresh air. Get medical attention as necessary. 24 Hour emergency: INFOTRAC, 800.535.5053. Complete product literature by Riverbed Concrete Inc. 830.981.2210. Refer to product data and MSDS for complete application and precautionary information.

Flooring Comparison Chart

	COLORANTS			FINISHES	
	Acid Stain	SIM Stain	Dye	Topical Sealer	Diamond Polished
What is it?	Chemical stain to be used with topical sealer	Acrylic stain colorant to be used with topical sealer	Concrete flooring colorant to be used with either a topical sealer or diamond polished flooring	30% solids, clear acrylic sealer	Hardened / Densified concrete that is brought to a shine using diamond abrasives
How does it work?	Chemical reaction with hardened concrete which yields a color compound	Very small pigment which is absorbed into the concrete surface and bonded with acrylic	Ultra fine colorant which is completely absorbed into the concrete surface	Topical clear coating, which is used to protect and enhance the colored concrete surface	Mechanical polishing of the concrete surface creates a glossy shine. Flooring is sealed with a non topical sealer (protects from the inside out)
Where to use?	-Interior or Exterior (Green and Blue Interior only) -Residential or Commercial -New construction -Remodel	-Interior or Exterior -Residential or Commercial -New construction -Remodel	-Interior only -Residential or Commercial -New construction -Remodel	-Interior or Exterior -Residential or Commercial -New construction -Remodel	-Interior only -Residential or Commercial -New construction -Remodel
Benefits	Natural occurrence of color modeling. A perfect colorant for rusts and leather tones	Broad selection of color for the south Texas décor, often exhibiting dramatic color modeling and crazing	Our favorite colorant. Dyes provide more color control, and greater degree of color options	Richens and enhances the floor color. Provides a great deal of protection from permeable liquids	Extremely high traffic wear tolerance. Flooring exhibits a beautiful shine similar to that of polished stone
Colors	8 standard colors that range from tans and rusts, greens and blue-greens, and shades of black	A wide variety of subtle earth tones with 20 colors to choose from	A wide selection of mixable colors for almost unlimited options. Colors of note: tans-light browns, absolute black, bright-vivid	Clear sealer	Dyes are suggested, but other options are also available
Durability	N/A	N/A	N/A	Medium – High	Very High

ACID STAIN

interior / exterior stain and seal



MALAY TAN



VINTAGE
UMBER



LAWN GREEN



AQUA BLUE



BLACK



GOLDEN
WHEAT



ENGLISH RED



COLA

SIM STAIN

interior / exterior stain and seal



ACCENT
BLACK



BRONZE



OLIVE



MAHAGONY



PERSIMMON



MOLASSIS

DYE (INTERIOR ONLY)

interior stain and seal / polished concrete



AZTEC GOLD



PHEONIX SUN



BURNT SUGAR



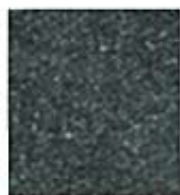
DESERT SAND



TERRA COTTA



SUMATRA



RIVER



BLACK



LEATHER



COCOA



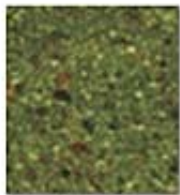
NUTTY



SIENNA



BURGANDY



MOSS



KELLY



BLACK 50%