

We encourage you to read the entire packet, but if you only read one thing, please read pages 1-3.

The owner, architect, superintendent, or owner's representative must be present for sign off approvals at 3 stages: sample approval, walk through approval, and final approval. Absence of representation represents a forfeit to augment the sample. Absence of a signature followed by request to change the finished product will incur an additional fee.

Process overview:

1. Approval estimate
2. Properly contract and all documentation
3. Contractor/owner to read and abide by GC Checklist
4. Schedule RBC start date a minimum of **(4) weeks in advance**
5. Change of schedule issued by "Contractor" is subject to RBC next available
6. Change in scope, work order or PO will be subject to an approved change order either onsite or issued by either parties office and agreed upon by both parties. Change orders are subject to re-scheduling and in doing so jeopardizes RBCs ability to accommodate other, pre-scheduled clients
7. Prepare jobsite in accordance with the info below
8. Arrange to be present or to have alternate decision makers as indicated below for sign offs of sample approvals, Walkthrough/progress approvals, and Final inspection approvals. Failure to do so will be subject to procedures indicated below.
9. Unless otherwise noted, **all installations are final and do not require, nor has been estimated for a re mobilization.** Request to return post installation will be charged accordingly.
10. Post installation flooring must be cleaned using RBC General Cleaner or written approval substitute. **Failure to do so will void your warranty unless otherwise stated.** It is mandatory that the client be given this warranty info and any retained cleaning supplies governed by RBC warranty regulations. Failure to provide owners with this information and corresponding products will void warranty.
11. It is the "Contractors" responsibility to request all submittals required, care and maintenance information and warranty documents. It is the "Contractors" responsibility to provide its client/owner with this care and maintenance information
12. Payment upon completion will be paid per contractual regulations.

Failure to comply with these policies and procedure may result in a change order.

Details:

Unless otherwise noted in approval attached, RBC has bid your project for a single mobilization and installation that is final and complete once RBC crew leaves the jobsite. This is especially true in the case of diamond polished concrete flooring, which is installed as commercial grade, durable flooring intended to stand up to normal wear and abuse while properly protected during the remainder of construction. Unless otherwise damaged there is no need to touch-up, re work or otherwise alter the initial installation. Requests to do so, or to re mobilize for any reason will be subject to a change order agreement or issuance of a new contract and subject to RBC scheduling availability.

RBC is a niche company in high demand for its services. All scheduling should be confirmed (3) weeks in advance from any desired start or arrival dates. All other requests will be subject to RBC availability to mobilize for "last minute" or ill prepared scheduling. RBC will not be held liable for any failures by "Contractor" to abide by RBC scheduling procedures.

RBC employs a strict policy of progress sign offs. It is required that an authorized rep from "Contractor", architect, owner or owner rep be present for all (3) check points. Failure to comply will result in an immediate cease/halt of project progress and installation cancelation until such authorization can be provided. If a project is "stopped" due to non-compliance the project will be resumed at RBC availability. If the overall project proceeds to a point beyond the initial scope,(ie. Finish materials present, etc.) a change order will be issued to compensate for any added labor. Note, proceeding with construction of finished materials prior to re-scheduling can and will have a negative effect in the final outcome of RBC finished product and ability to properly perform its scope of work. Please see item (1) in GC checklist attached.

RBC requires sole access to its work areas. Work areas must be cleaned of all debris and broom swept prior to RBC arrival. Once on-site no other crew, tradesmen or laborers should be allowed into an RBC designated area. Our work areas must remain clean and free from foot traffic at all times. This a quality concern as much as a liability. RBC work areas are considered hazardous. Highly flammable materials, extremely slippery when wet, high voltage and large machinery are but a few of liability concerns present on an RBC jobsite and prohibits the inclusion of other non RBC members in our work area. Any failure of "Contractor" to not manage RBC work area will be 100% the liability of the "Contractor". It is at the discretion of RBC to cease/halt progress and re-schedule at "Contractors" expense if these and all other requirements are not met.

In most instances RBC will provide its own power for its machinery in the form of a 45KW mounted to an E5500 medium duty truck towing a 36ft enclosed trailer. RBC requires parking and mobilization of its equipment no further than 100ft from access points to all areas of project.

RBC employs a wet diamond cutting process for the majority of its projects. This is considered hazardous for slip and fall accidents but also for high voltage electrocution. Water should be provided in the form of a hose bib no further than 100ft from installation area and accessible by large, drivable wheeled machinery.

Sufficient lighting should be provided for RBC to adequately perform its work in all areas. Failure to do so will result in delays and fees to provide and set up lighting.

RBC installs its projects with a close regard for written specifications. If none is provided RBC will defer to the written spec contained in this document packet. Any alteration request from specification will require

approval and may result in necessary change orders, RFI and ASI documents. Approval of final process will be required in the form of a signed sample document outlining and displaying the installation process.

Concrete flooring is extremely depended on the trade partners whom directly influence the outcome of our products and services. The “Contractor” is relied upon to hire quality trades for the placement and finishing of the concrete and other trades that may directly affect the substrate and final product quality, paying special attention to the quality of the concrete finish in both areas of field and edging.



GC Checklist

The following qualifications should be addressed prior to and after the installation of Riverbed Concrete Inc. decorative concrete flooring. If any of the below requirements cannot be met, for any reason, please contact Riverbed Concrete Inc. @ 210.845.2008 to discuss other alternatives.

Pre-Qualifications:

1. All paperwork, including approved work order estimates and RBC contracts should be turned in to RBC prior to the job start date. If the terms of the estimate define a 50/50 payment term, the down payment should be received by RBC prior to the start date.
2. Work should be scheduled after framing and before sheetrock for polished concrete flooring. Work should be scheduled after sheetrock and before paint and base board for stained and sealed concrete flooring.
3. Riverbed Concrete Inc. is routinely booked in advance with other clients up to 30 days. Please schedule your project start date early to help guarantee your desired start date and prevent project delays.
4. Concrete should be poured to the flatness and levelness ratings as indicated in the spec sheet and if a curing compound is desired, the Cure R (resin based) or similar product should be used as in the spec sheet.

Job-site/Work-site Qualifications:

1. Worksite should be free from all construction debris prior to RBC's arrival.
2. Worksite should be swept and generally in "clean" condition.
3. Worksite should be clear of ALL other trades and workers. RBC must have sole access to its work areas.
4. Jobsite should provide access for (1) truck and (1) 24' trailer to safely back-up to a loading/landing area to adequately unload (3) 1400lbs. machines from a trailer door ramp.
5. Jobsite should provide access for (1) truck and (1) 12' trailer with attached 35KW generator, which will provide the power for our 220V and 110V requirements.
6. Jobsite should provide reasonable access to water. If water is not available on-site or water is located in an area inaccessible to wheeled carriers, water may be made available by RBC. RBC's provision of its own water source to the jobsite may add a reasonable fee for transportation and set-up.
7. GC should arrange with RBC to coordinate with the owner, representative, or qualified project manager to be onsite the morning of the start date to approve color and finish samples. (We generally ask that samples be approved by 10am the day of the project start date.)

Post Qualifications

1. All hydraulic lifts should be diapered to prevent oil stains.
2. If you decide to cover the final polished concrete flooring, do so with a breathable covering. ie. Cardboard, construction paper, etc. DO NOT COVER WITH PLASTIC.
3. DO NOT allow acids to come in contact with the polished concrete
4. DO use a neutral pH cleaner for the final clean of the floor surface
5. (Polished concrete only) If there are white blemishes on the finished floor use a green or black scrubbing pad affixed to a buffing machine or auto scrubber to remove.

I, _____ have read and am aware of the requests made by Riverbed Concrete Inc. for the above qualifications, and that the provision of these qualifications will help to ensure a successful installation. Delays resulting from the not executing the above qualifications will result in hourly penalties of \$120.00/hour.



**RIVERBED CONCRETE:
IMPORTANT INSTRUCTIONS AND CLIENT AGREEMENT FOR STAINED CONCRETE**

The final result of any stained floor is determined primarily on the quality of the pour and the ongoing protection of the slab during construction. The Builder is responsible for relaying the following important information to the concrete contractor and all other sub contractors involved. COMMUNICATION is vital for the success of this project.

INTERIOR CONCRETE / EXTERIOR CONCRETE:

1. A quality batch of concrete should consist of standard 5-sack mixture with no additives, fillers or curing agents (no fly-ash, retarders, or chloride accelerators). We encourage a smooth hard, MACHINE troweled finish for interior surfaces, all the way to the edges of the slab; swirls from troweling add beauty to the floor. Exterior concrete may have either a light broom or salt finish.
2. It is important that the concrete be thoroughly finished with hand tools around plumbing, risers, floor outlets, or any other element, which is not accessible to the machine.
3. Please refrain from using silicone chalks; the red and yellow chalks consist of permanent dyes that will negatively affect the final outcome of the project. Try not to over mark for framing, or use silicone or other sprays to "hold" lines. (The sprays repel the stains and leave harsh scars in the final floor).
4. It is imperative that wood, sheet goods, sections of framing and the like not lay on the slab for long periods of time. They can transfer resins and tannins that can alter the moisture content in the slab and leaves a permanent likeness in the finished floor. Do not use red resin paper on the slab.

The floor should be protected from the following:

RED CHALK	MARKERS	COFFEE
FOAM INSULATION	SPRAY PAINTS	METAL NAILS/RUST
CURING COMPOUND	CRAYONS	FOOD
OILS	MURATIC ACID	GREASE
GREASE	PAINT	COKE
POLYURETHANE	PVC PRIMER/CLEANER	LUMBER, SAW DUST,
ADHESIVE	DIESEL	BOARDS, ETC.
FLUX	WAX PENCIL	STAIN
GAS	PRIMER	PAINT

The above chemicals prevent the floor stains from penetrating. Muratic acid should never be used on concrete.

5. The framers should brace the wall to the outside and not the slab. The doorplates should be cut away immediately.
6. The floors should be clean and the rooms empty of debris before our crew arrives. Our price does not include; removing paper, moving furniture, tools, equipment, fixtures, building materials or otherwise. There should be no other trades on the floors or scheduled at the same time as Riverbed Concrete.



Riverbed Concrete will require sole access to the contracted application area, unless otherwise approved. Riverbed Concrete will not be held liable for outcomes resulting from damages subjected to the work area prior to or after the contracted dates. Riverbed Concrete will not be held liable for any damage caused by trades or other traffic during the contracted period.

7. We make every effort to provide beautiful and cost effective floors. Our fees do not include:

Post construction cleaning, sealing, waxing, protective covering, or any other service not itemized in the bid. Our fees are based on square footage. We measure wall to wall, we do not credit for cabinets, built-ins etc. This is the industry standard.

7a. All prices, unless otherwise specified are for stained concrete flooring to be scheduled after sheetrock, but before paint and baseboards or any other point in construction when tape and paper protection is not required to protect finished interior or exterior materials/items. If it is necessary to tape and paper, an added fee of no less than \$.30/sq.ft. will be added to the final invoice.

8. It is important that you do not apply tape directly to the floor. When covering the flooring, overlap sheets of builder's paper; first by taping directly to the wall then overlap the additional sheets to the original piece. This is IMPAIRATIVE; the tape alters the curing process and transfers chemicals to the slab and will show in the finished product. (Duck tape masking tape, packing tape, blue tape, green tape, and electrical tape, are not to be used. When covering the floor, you may use sheets of masonite or cardboard, on top of builders paper. Do not cover the slab with plastic at any time. It interferes with the curing process of the slab, and causes efflorescence. Riverbed Concrete is not responsible for moisture or related concerns.

9. There must be two 110 volt outlets on two separate 20 amp breakers not more than 150 feet from the furthest point of the slab available to our crew. Running water also needs to be available, and trash receptacles. Sufficient ventilation, water sources, power sources, and lighting will be provided by the second party. If either of these site conditions are not adequate or become compromised during the contracted period, the completion date will be altered to Riverbed Concrete's desired date. Overtime rates will become applicable upon said circumstance.

10. Acid stains are chemical metallic salts, which seek out and react with the lime in the concrete. They can be manipulated, but not controlled and anticipated, but not guaranteed. Our color chart shows color reactions, but every slab is different. All elements and conditions affect the outcome of the floors. Exact colors and stain patterns cannot be achieved, it is important that all parties understand this.

10a. It has been explained to the second party that acid stains have a chemical reaction with the concrete to be stained. These reactions are often unpredictable and unique to each individual slab. The desirable, non uniform nature of acid stains are referred to as color modeling and can be experienced for a variety of reasons and expressed in a variety of forms. Color modeling is very common when using acid stains, and should be anticipated by the second party. The quality and condition of the slab to be stained is not the responsibility of Riverbed Concrete.

How Acid Stains Work- Acid stains, which are metallic salts in an acidic, water based solution, react with hydrated lime in hardened concrete to yield insoluble colored compounds that become a permanent part of the concrete surface. The acid in chemical stains etche the surface allowing the metallic salts to reach and react with free lime deposits. Chemically altered dense surfaces, caused by hardeners, densifiers, or curing compounds can prevent the stain from adequately penetrating the slab surface, resulting in an excessively modeled appearance.



10b. SIM Stain is an alternative to acid based concrete stains, providing color by penetrating the surface of the concrete and are locked into place utilizing a modified acrylic compound. SIM Stains are water-based and are environmentally friendly colorants which contain a low VOC content. There is no chemical reaction as with typical acid stains. This allows for an expanded color palette unattainable with acid stains, and increased color predictability. The penetration depth of SIM Stain is comparable to acid stain and results in similar wear ability. SIM Stains can be chosen for interior or exterior use. Unlike acid stains, Blues and Greens may be chosen for exterior use.

10c. Concrete dyes are translucent, penetrating color solutions suspended in either a water or solvent solution. Unlike acid stains they do not react chemically with concrete. Instead, they contain very fine coloring agents that penetrate into the concrete surface. These extra fine coloring agents work well for diamond polished concrete for their ability to penetrate tight concrete surfaces. Dyes may also be used for any tradition interior concrete flooring application (hand or machine trowel), and exhibit a wide range of available colors that can be mixed to create custom hues. Concrete dyes are not UV stable thus making them unsuitable for exterior application.

Drying periods:

Stain- 12 hrs.

Sealer- 72 hrs.

Cleansing- 12 hrs.

11. Overlay products are hand applied. It is inherent in the material that ridges, trowel marks, "skip" trowling, burning, height variations, and material thicknesses are to be expected. The finished re-surfacing produced by overlay products typically resembles that of a plastered wall, leather, or a similarly textured surface. The textured surface greatly is affected by the substrate which may show through in the final product. When re-surfacing entire areas, it is expected that the installer may miss filling in small areas along walls, corners, cabinets, or similar obstructions.

12. The customer is aware that a degree of inconsistencies and defects will be present in the final product. Stained and sealed concrete flooring systems are hand applied by trained artisans. Stained flooring is an artistic application with each project exhibiting its own unique nuances dictated by conditions, application methods, on-site variables, material variables, craftsmanship, and available time frame. Variances in texture, color, sealer, gloss, and relative smoothness are to be expected.

13. A change order contingency of 20%, added to the project total will be charged for any alteration requests made after the signing of this contract. This document and any written attachments constitute the entire agreement between the Parties. Rates for overtime caused by an agreed upon alteration of work schedule. Additional Fee: \$ 300.00 / day.

14. Riverbed Concrete Inc. takes all necessary precautions and measures to ensure and improve onsite conditions they arise. All processes and procedures are variable, requiring onsite, immediate decisions. All processes and procedures are considered a creative, artistic expression. Amounts up to 20% of the estimate total may become applicable to cover added work without a written change order and invoiced separately from the estimate. Any and all added charges over the estimate total will abide, or be directed by, the current Riverbed Concrete Inc. rates and charges price list, unless otherwise agreed in writing. With the variables in decorative concrete flooring, the client is contracting for expertise in creative, problem solving solutions to onsite variability, as no two jobs are alike, and every project presents hidden challenges that can not be fully foreseen until work begins.

15. To insure proper scheduling, please contact us at least 3 weeks in advance. We work very hard to accommodate most schedules. Please assist us by communicating your project status and any questions



or concerns you may have. We are committed to the outcome of the project. We appreciate that you are too.

16. Floor maintenance is the sole responsibility of the second party. We suggest the application of wax as a sacrificial barrier between abrasion and the finished floor. For everyday cleaning the use of a mild detergent soap is recommended. Common kitchen floor cleaners are suitable as well. Refrain from using acidic cleaners or strippers such as muratic, sulfamic, or orange concentrate cleaners. Do not use wet swiffer type mops.

a.) In high traffic situations, resealing the concrete may become necessary to protect the acid stain. This should be performed by Riverbed Concrete and will be invoiced separately.

17. A design fee of \$50.00 / hr. will be applied for requests of Riverbed Concrete Inc. to assist the homeowner, builder, carpenter, or similar in the layout, function, construction, and specific, overall or general design of a project.

18. In consideration of the mutual promises set forth herein, Riverbed Concrete covenants and agrees that it shall perform services rendered in a timely, professional manner, providing quality results set to Riverbed Concrete standards. Riverbed Concrete is not liable for color or texture inconsistencies, nor to be held responsible for differences in opinion of color tone, color modeling, texture, or other disagreements and opinions of color or texture. All verbal agreements are void unless otherwise stated in this contract.

Any claim or controversy arising among or between the parties hereto and any claim or controversy arising out of or respecting any matter contained in this Agreement or any difference as to the interpretation of any of the provisions of this Agreement shall be settled by arbitration in the city of Boerne, Texas by Three (3) arbitrators under the then prevailing rules of the American Arbitration Association.

In any arbitration involving this Agreement, the arbitrators shall not make any award which will alter, change, cancel or rescind any provision of the Agreement and their award shall be consistent with the provisions of this Agreement. Any such arbitration must be commenced no later than sixty (60) days from the date such claim or controversy arose. The award of the arbitrators shall be final and binding.

(Signature)

(Printed Name)

Dated: _____, 20_____

FOR PROFESSIONAL USE ONLY. Read all applicable and current product information for your project: Technical Data Sheet (TDS), Color Chart, Installation Guide, Material Safety Data Sheet (MSDS).

MasterFormat™ Guide Specifications, and Butterfield Color Architectural Details and Specifications are available for the specifier/designer. All information is available for download online at www.butterfieldcolor.com

1. Description: Clear Guard® Cure and Seal is a solvent-based, VOC compliant, non-yellowing, curing, and sealing compound for newly poured and existing concrete surfaces. The product is formulated for curing and sealing uncolored concrete, integrally colored concrete, and color hardened (shake-on) concrete, stamped or stenciled concrete, and cementitious overlays. It is recommended for use with Uni-Mix® Colorant and Uni-Mix® Liquid integral coloring systems, Perma-Cast® Shake-on Color Hardener, Perma-Cast® Sierra Stain™, T1000™ Fine Overlay, and T1000™ Stampable Overlay. Clear Guard® Cure and Seal is compatible with Color Guard™ Cure and Seal. It is suitable for residential or commercial projects, interior floors, exterior hardscapes, and vertical surfaces.

Clear Guard® Cure and Seal visually enhances the concrete color, protects the surface from dirt and staining, and minimizes the affects of de-icing salts and exposure to gas or oil. It is well suited for application to cured concrete to prevent absorption or penetration of many fats, oils, greases, aliphatic solvents, salts, acids, and other chemicals. By preventing penetration of these compounds, Clear Guard® Cure and Seal provides good economical protection for floors and hardscapes, thereby reducing maintenance costs.

As a curing compound, it improves the surface strength, abrasion resistance, and durability of the concrete, and reduces the potential for plastic cracking. It forms a moisture barrier that prevents free lime in the concrete from migrating and reacting at the surface, forming a dust residue. Curing with Clear Guard® Cure and Seal also provides interim construction protection from most oils, greases, chemical spills, and from the adhesion of mortar splashes. Final cleanup costs are reduced and the resulting concrete surface appearance is greatly enhanced. Clear Guard® Cure and Seal can also be applied to old concrete, terrazzo, brick, and masonry tiles to dust proof and impart stain and chemical resistance.

Clear Guard® Cure and Seal is a Methyl Methacrylate Acrylic copolymer specifically designed to meet the moisture retention properties of ASTM C-309, AASHTO M-148, Navdock 13 YF, and ORD

C-300, when applied at the recommended coverage rate. It is a clear liquid (25% solids by weight), which dries to a high gloss, UV stable film. Clear Guard™ Cure and Seal complies with all VOC (<700 g/L) requirements and other Federal and State Air Quality Regulations. The longevity of Clear Guard® Cure and Seal depends upon the dried film thickness, exposure, and use conditions. Clear sealers will scratch and scuff, and will require maintenance. Treated surfaces are readily recoated with adequate cleaning.

2. Limitations: Do not use on concrete slabs with inadequately drained sub-grade and/or surfaces subject to hydrostatic water pressures. Do not use in swimming pools, fountains or ponds. Do not use on surfaces that will have direct food contact. Do not use for recoating or in conjunction with other floor sealers, treatments, bond breakers, or adhesives without prior test to determine compatibility and adhesion. Do not use to fill or repair cracks in the substrate.

Treated surfaces may be slippery during application prior to drying, and when wet with water or liquids after drying. Concrete should be textured sufficiently to eliminate potential slipping hazards. In addition, use a non-slip additive with the Clear Guard™ Cure and Seal. Interior floors may be maintained with a slip resistant wax. Test and confirm that the material is adequately slip resistant prior to opening installation to any traffic.

3. Cautions: Combustible liquid and vapor. Extinguish all pilot lights and other sources of open flame. May cause eye, skin, and respiratory irritation. Do not take internally. Keep out of reach of children and animals. Wear an organic respirator, eye protection, and protective clothing during application. Cover plant material. Ensure adequate ventilation during and after application. Prevent fumes from entering the HVAC system. In case of spillage, absorb and dispose of material in accordance with local, state, and federal regulations. Before use, read the Material Safety Data Sheet (MSDS).

4. Chemical Resistance: Clear Guard® Cure and Seal provides 24-hour spot resistance to the following chemicals with little, if any, coating effect:

antifreeze	deicing salts
foods	fruit juices

vegetable oil	vegetable extracts
diesel fuel	petroleum oil
ethanol	power steering fluid
calcium chloride	sodium chloride

For materials not appearing in this chart, a test application is necessary.

5. Packaging:

Container	Content
Pail	1 US gallon (03.8 L)
Pail	5 US gallon (19.0 L)

5.1 SHELF LIFE: Indefinite, when stored in original, unopened containers, in dry storage.

6. Coverage: Coverage rates vary with surface texture and porosity, ambient and surface temperatures, method of application and approximate the following rates on a broom finish:

Curing: 200 ft²/gal (4.9 m²/L)
Sealing: 200-400 ft²/gal (4.9 – 9.8 m²/L)

Avoid excessive build-up, particularly in the depressed textures and grout joints of stamped or stenciled concrete, hand tooled or saw cut joints. Thicker applications may lead to discoloration and diminished sealer performance. Wipe up or brush out excessive material before the film becomes tacky.

7. Application: Clear Guard® Cure and Seal may be applied using a short nap solvent resistant roller, hand pump sprayer, or airless sprayer. Best results are obtained when product is applied at substrate temperatures in excess of (50°F), (10°C). Do not apply at or below (45°F) (7.2°C) or when such temperatures are expected within 12 hours following application. Control interior environment to prevent condensation from forming on the surface prior to sealing and before the sealer has become tack free. Do not apply if there are concerns with the quality of the color or finish of the concrete, until those concerns are adequately addressed.

When using a sprayer, apply material with a fan pattern nozzle. Spray equipment should be clean and in good working condition. Sprayer seals must be solvent resistant. Hand pump sprayers must be capable of delivering moderately viscous liquids. Care must be taken to protect adjacent areas from over spray.

7.1. NEW CONCRETE: UNCOLORED,

Clear Guard® Cure and Seal

Technical Data Sheet CG-02

INTEGRALLY COLORED, COLOR HARDENED: Apply Clear Guard™ Cure and Seal immediately following final finishing and after the slab is firm enough to walk on without damage. Do not apply if bleed water is present. Apply to vertical surfaces immediately following form removal. Avoid runs or puddles and over application. To achieve maximum sealing and dust-proofing benefits, a second application should be made at least two weeks after the cure coat application. Surfaces to be retreated should be dry and clean. Apply in a continuous wet surface film. Application of product over excessively smooth, hard-troweled surfaces may result in adhesion loss.

7.2. COLORED STAMPED OR STENCILED CONCRETE: After concrete has been stamped using Perma-Cast® Antiquing Release agent, thoroughly remove the residual release powder by washing and scrubbing. The concrete should be allowed to dry thoroughly before applying Clear Guard™ Cure and Seal. If Butterfield Color® Clear Liquid Release is used, do not apply Clear Guard™ Cure and Seal until the liquid release has sufficiently evaporated (no wet sheen gloss) from the surface. Read the Perma-Cast® Antiquing Release and the Butterfield Color® Clear Liquid Release Technical Data Sheets before applying products.

7.3. EXISTING CONCRETE: Adequately remove accumulations of grease, oil residue, incompatible curing, or sealing compound residue and other substances that would diminish adhesion. Wash surfaces thoroughly. Allow surface and joints to adequately dry before applying Clear Guard™ Cure and Seal. Very rough, porous and deeply textured surfaces may require multiple applications to ensure the formation of a protective film, without pinholes or holidays.

Before application of sealer the Moisture Vapor Emission Rate (MVER) of the concrete or cementitious topping must be measured and be less than 5 pounds per 1000 square feet per 24 hours (2.5 kg/100 m² / 24 hours). Promptly clean application equipment with Xylene following use. Handle and dispose of cleaning residue properly.

8. Maintenance: Periodically inspect cured and sealed surfaces for wear or

damage. All concrete curing and sealing compounds will eventually exhibit the affects of weathering and traffic. For maximum coating life and performance, wipe up all chemical solvent or petroleum spills as soon as possible. Remove abrasive debris by sweeping or vacuuming. Do not drag, drop or place sharp edges on sealed surfaces. Periodic washings with mild detergents will help maintain surface luster. Do not use solvent or acid based cleaning materials for general cleaning. Hot car tires or turning tires while car is standing may damage the sealer. Surfaces that will be subjected to car traffic, de-icing salts or chemical exposure, must receive minimally, two applications of Clear Guard™ Cure and Seal.

Prior to recoating, the surface and joints must be clean, dry, free from cleaning product residue, other contamination, or loose materials, which will affect the adhesion of Clear Guard™ Cure and Seal. When recoating, a slip resistant additive must be added to the sealer.

8.1. INTERIOR FLOORS: Regularly clean by dry and wet mopping. Periodically machine scrub, rinse, and wet vacuum the surface. Apply a maintenance wax or slip resistant wax as directed by the wax manufacturer. This type of periodic maintenance will greatly enhance the appearance of the floor and minimize the need to strip and/or reapply the sealer.

8.2. NO GLOSS FINISH: Clear Guard™ Cure and Seal can be modified in the field to reduce the surface shine of the dried film with Flattening Paste. It is a solvent-based silica paste that is added directly to the sealer. Add the contents of the one-quart (0.95 L) container to 5 gallons (19 L) of sealer. Do not thin or alter with any chemical. Mix thoroughly with a drill mounted mixer. Do not introduce air bubbles into sealer by excessive high speed mixing. Once Flattening Paste is added to the sealer; remix periodically during the application and before each use of the mixed products.

8.3. DRY TIME: Drying times will vary depending upon wet film thickness, surface texture and porosity, ambient and surface temperatures, humidity, and if the product is being used as a cure coat or a seal coat.

At 70° F, approximate dry times:

Tack free: 1 hour
Light foot traffic: 6 hours
Light car traffic: 24 hours
Normal car traffic: 72 hours

9. Quality Control: Cast a job site sample at least 21 days prior to the installation for approval of color and finish. Utilize all materials, tools, and techniques from the actual job in the mock-up. Consistent batching, pouring, finishing, curing, sealing, and preparation techniques, will ensure the uniformity of architectural concrete. Verify adequate wet and dry slip resistance. Discuss maintenance requirements. Site visits by Butterfield Color, Inc. personnel are for making technical recommendations only and not for supervising or providing quality control. Maintenance requirements should also be discussed.

Warranty Disclaimer/Limitation of Liability: BUTTERFIELD COLOR, INC. MAKES NO WARRANTIES REGARDING THIS PRODUCT, EXPRESS OR IMPLIED, INCLUDING WARRANTIES OF FITNESS FOR A PARTICULAR PURPOSE OR MERCHANTABILITY. BUTTERFIELD COLOR, ITS DIRECTORS, OFFICERS AND EMPLOYEES SHALL NOT BE LIABLE FOR INDIRECT, SPECIAL OR CONSEQUENTIAL DAMAGES OR PERSONAL INJURY ARISING OUT OF THE USE OR HANDLING OF THIS PRODUCT WHETHER OR NOT BUTTERFIELD COLOR, INC. HAS BEEN ADVISED OF THE POSSIBILITY OF SUCH A LOSS OR DAMAGE. PURCHASER ASSUMES ALL LIABILITY FOR THE USE AND HANDLING OF THIS PRODUCT INCLUDING ANY INJURY TO THIRD PARTIES. BUTTERFIELD COLOR'S MAXIMUM LIABILITY SHALL BE THE PRICE OF THE PRODUCT.

Owner's Manual

Protecting your stained concrete flooring

Stained concrete floors are tough and durable but are not impervious to wear and tear. General care and maintenance should be observed to ensure your investment looks and performs great for many years.

Plastic glides, felt pads or Magic Movers should be affixed to heavy furnishings or those which will move frequently. Use the same precautions you would use for a hard wood floor. A door mat at the outside (Hemp or Rope style) and inside entrance (one with a perforated, breathable back and that is not made from rubber or plastic) of a home will pick up over 85% of the dirt that would otherwise be tracked inside.

One important thing to mention about your walk-off mat is how to choose one. For the first month, an open-back mat such as a carpet remnant should be used while the sealer/finish cures. Plastic-backed products should NOT be used for your mats. An acrylic, rubber, or plastic backed mat can cause discoloration or sealer failure under and around the mat.

Cleaning your stained concrete flooring

Daily Maintenance

- Dust Mop Regularly - This will remove the fine dust and grit which can grind away floor finish (Sealer and/or Wax). This practice will help prevent major floor finish deterioration caused by normal foot traffic. The best results are obtained by using a Micro-Fiber Dust Mop.
- NEVER use a "Swiffer Wet-Jet" type of cleaning tool. The liquid in these devices contain trace amounts of Solvent material. The Solvent will harm the sealer. Also, you should not use Ammonia, Bleach or Pine Sol.

Damp mopping - use cool water

- Damp mopping with cool water and **Riverbed Concrete's General Cleaner** (a neutral ph cleaner) will protect the floor finish. It will not dull the finish and will enhance the gloss retention. (See below for General Cleaner specifications and additional information.)
- Follow the recommended dilution rates on label directions.
- The mop should be wrung out tightly so that it is just damp. Do not allow the cleaning solution to puddle.

Waxing and sealing your stained concrete flooring

Wax is an optional sacrificial coating which when applied correctly can protect the sealer, and bear the brunt of the scuff and scratches. An optional coating of **Riverbed Concrete's Floor Finish** may be requested by the customer and will be itemized as an additional coating on the final invoice. (See below for Floor Finish specifications and additional information.) Riverbed Concrete Floor Finish may also be applied in a DIY fashion by the owner. See below for further details.

- Re-waxing depends on the traffic and abuse subjected to the floor. It varies by owner and application (commercial/residential) and may be anywhere from:
 - High Traffic Areas: Every 4-5 weeks
 - Moderate Traffic Areas: Quarterly – Semi Annually
 - Low Traffic and/or Edges: Annual or greater



Neutral Cleaner / Wax: Troubleshooting

Problem	Probable Cause	Solution
Floor is Streaky.	Floor was still dirty before mopping	Allow floor to dry and dust mop
Footprints at entrance area.	Dirty Walk-Off Mat(s).	Shake/Clean walk-off mats.
Floor is Spotty.	Too much solution water remained on floor.	Water solution shouldn't puddle. Use a <u>damp</u> mop so liquid will not stand on floor.
Floor is Sticky.	Too much cleaner solution in water.	Re-mop floor with clean water to remove excess cleaner. Sample solution ratio: Use 1 OZ of solution to 1 Gal of clean water.
Floor has a Milky White Spot	Something wet remained on the floor causing the acrylic in the sealer/wax to discolor.	Wipe up any remaining liquid and allow floor to dry. Once dry, the Milky spot will fade.

***Don't forget to rinse & clean the mop & bucket after use. Shake or brush off dust mop before using.

Cleaning Methods

Do NOT use:

- High pressure washer equipment
- High alkaline cleaners, degreasers, or strippers
- Solvent cleaners
- Floor pads: green, brown, or black (noted for commercial cleaners)
- Nylo-grit or Strata-Grit rotary brushes (noted for commercial cleaners)
- Apply tape of any kind directly to the concrete surface.

Sealer Damage

If gouging or other damage occurs, spot retouching can repair the problem area/s. If retouching is required please contact Riverbed Concrete (830.981.2210).

- It is recommended that all necessary maintenance or repairs be performed immediately. Exposure of unprotected, damaged sealer will leave the floor vulnerable to further damage or wear. This may become irreversible.
- Wearing off the sealer will expose the stained floor making it vulnerable to damage. To protect the finished concrete and stain color, a properly functioning top coat of sealer/wax must be maintained. If any bare concrete is noticed please contact Riverbed Concrete to schedule a re-coating of sealer or wax.

*Please Note: The maintenance instructions below are intended for reference purposes only. Always test a small area to ensure your products and systems are compatible with the installed Decorative concrete system. Ensure all sealers and coatings are fully cured before the application of any maintenance products.



Special Instruction for Specific Cleaning Procedures

Below, you will find cleaning procedures addressing specific cleaning and maintenance procedures. Please be aware that all concrete surfaces are different and as such all cleaning methods below should be sampled in an inconspicuous space to ensure compatibility with your specific concrete flooring. Please call Riverbed Concrete Inc. 830.981.2210 for questions regarding the care and maintenance of your concrete flooring. Your concrete flooring is considered a final and completed system. Any repairs, request, or alterations (including cleaning) will incur additional fees. It is the responsibility of the owner/contractor to coordinate the post construction and general cleaning of this final installation.

Commercial Cleaning/Post Construction Cleaning:

Unless otherwise stated, once Riverbed Concrete leaves the jobsite, your installation is complete and final. It is the responsibility of the professional cleaning and post construction cleaning crews to properly prepare and provide final cleaning of Riverbed installed concrete flooring for use by the owner prior to owner occupancy.

1. Deep Cleaning

Deep cleaning to lessen the appearance of oils and to remove caked on grim and filth from construction or construction use should be performed utilizing Riverbed Concrete Inc. General Cleaner at a dilution of 2-3 oz/ 1 gal as indicated in the General Cleaner instruction. This can be performed with a rotary or auto scrubber using an industry approved pad for the use of general cleaning. Please conduct a test sample using the pad to ensure it is not too aggressive. An indicator of a pad being too aggressive is the removal of any top coating, the excessive wear of a top coating, the appearance of swirls or scratches left in a circular pattern, or excessive scuffing or dulling of the surface.

2. Oil Staining

Oil stains are identified as dark colored stains on the concrete surface. These stains often can be removed with the use of Riverbed Concrete Inc. Poultice Paste. Please test for compatibility. Please be aware that poultice pastes should be applied cautiously. They are powerful and in addition to removing an oil stain, will often also remove any coatings, sealers and or stains/dyes/color from the concrete surface. They may also etch the concrete surface. Test for compatibility and spot treat only.

3. Etching / Acid damage

Etching is caused from acid etching and is identified as a light colored blemish in the concrete surface. Acid damage may be caused from a variety of factors including but not limited to: Uric

acid, acidic liquids such as juices and wine, harsh cleaners and high pH cleaners, vinegar products, etc. All acidic spills should be cleaned immediately and treated with Riverbed Concrete Inc. Acid Neutralizer. If etching is present post cleaning, a light repair with water and automotive sandpaper (recommended 400 grit and higher) or diamond abrasive pad will be required to buff the affected area.

4. Rejuvenating the Shine

- a. It may become necessary to rejuvenate the shine of a concrete floor installation. This may be necessary immediately during construction, post construction, or after daily use. With proper care and maintenance during construction it should not be necessary to make any alteration to the installed flooring requiring Riverbed Concrete Inc. to return to your project. Any request to do so will result in added fees. Otherwise, please contact your professional cleaning / post construction crews and have them abide by Riverbed Concrete Inc. instruction for care.
- b. Polished concrete flooring: For polished concrete installations with no application of a topical guard, the polished concrete surface can be enhanced in gloss utilizing a high speed burnisher and appropriate diamond impregnated pad combination. Please be aware that all concrete flooring is different and testing should be conducted to determine the correct pad combination to enhance/rejuvenate the shine without damaging the concrete surface. Please conduct a test sample using the pad to ensure it is not too aggressive. An indicator of a pad being too aggressive is the removal of any top coating, the excessive wear of a top coating, the appearance of swirls or scratches left in a circular pattern and excessive scuffing or dulling of the surface.
- c. Stained and sealed concrete flooring: Your stained and sealed concrete flooring has been sealed with a topical acrylic sealer. These sealers are more easily damaged compared to polished concrete flooring, and as such extra care should be taken to protect the surface. If mild scratches, scuffing or lose of shine occurs during construction or from daily use, the surface can be maintained utilizing a floor buffer (high speed machines should only be used by professionals and done so with extreme caution). The use of Riverbed Concrete Inc. Floor Finish is recommended in conjunction with a cleaning pad affixed to the above referenced floor buffer. Please conduct a test sample using the pad to ensure it is not too aggressive. An indicator of a pad being too aggressive is the removal of any top coating, the excessive wear of a top coating, the appearance of swirls or scratches left in a circular pattern and excessive scuffing or dulling of the surface.

General and Daily Cleaning

1. It is important to keep your flooring clean from dust and debris to minimize slip hazards and to prevent an abrasive affect to the concrete flooring surface. Dust can act as a ball bearing effect under foot traffic causing increased slip potential and voids the NFSI, high traction rating for polished concrete flooring. Larger debris such as dirt and sand, etc. will have a detrimental long

term effect to the surface of your concrete flooring, especially under high traffic commercial demands.

2. Dry dust mopping should be implemented on a regular basis.
3. Wet mopping should also be performed on a regular bases utilizing Riverbed Concrete Inc. General Cleaner at a ratio of 1oz / gal as indicated on the General Cleaner instructions. Rotary and autoscrubber pads should be used with caution while paying close attention to the grit of the pad and its intended use. The regular use of rotary cleaning to sealed concrete flooring may expedite the need to re-seal. Rotary and autoscrubber pads should also be used with caution on polished concrete flooring, and may over time lessen the intensity of dye colorants. Reference, "Rejuvenate the Shine" above for further descriptions of pad use.
4. Riverbed Concrete Inc. Conditioner should be used on polished concrete flooring only. Its use will further fortify the polished concrete surface impregnating the concrete with the chemical reaction required for densified, hardened concrete. This practice will prolong the shine and integrity of your polished concrete flooring. Please reference instructions.

Note: Contained in this list of procedures is the recommendation to use Riverbed Concrete Inc. cleaning products. These cleaning products are a requirement to maintain your warranty. Please reference specific instructions included with each product on the label or found the downloadable documents found at: www.riverbedconcrete.com



Project:

Completion Date:

GENERAL WARRANTY

Riverbed Concrete Inc., does hereby guarantee and warrant all work performed by Riverbed Concrete Inc. on the above referenced project for a period of one (1) year from substantial completion of contracted work. This warranty provides that all materials and equipment furnished under the contract is of good quality and new. The work will be free from defects excluding what is inherent in the nature of the product or permitted in Riverbed Concrete Inc. allowable tolerance, and the work will conform to the requirements of the contract documents.

This warranty excludes failures caused by occurrences beyond Riverbed Concrete Inc.'s control including, but not limited to, acts of God or public enemy, acts of war, rebellion or sabotage: fires, floods, explosions, accidents: riots or other acts of workers, whether direct or indirect: or, any other causes whether or not of the same cause or kind as those specifically named above, which are not within the control of the party affected and which, by the exercise of reasonable diligence, said party is unable to prevent or provide against.

Riverbed Concrete Inc. does not warrant for negligent use of its installed/manufactured products. Strict adherence to Riverbed Concrete Inc. documents, contracts, agreements, instruction, care & maintenance, and all expressed information must be adhered to for compliance with warranty terms.

Riverbed Concrete Inc. general warranty is considered void if cleaning products outside of the Riverbed product line are used (unless under prior written approval). Warranty is void unless all required paperwork and documents have been signed and approved and warranty is signed by both parties.

Amendments to warranty:

Customer Signature: _____ Date: _____

Riverbed Signature: _____ Date: _____

Floor Finish

Riverbed Concrete Floor Finish is formulated for use on stain & seal concrete flooring. It contains 20% solids to provide an exceptionally durable, high gloss shine, while resisting scuff, heal marks, and slips. Riverbed Concrete Floor Finish performs well with stained and sealed concrete flooring and will provide lasting, low maintenance protection.



Instructions for Use:

Preperation: Sweep or vacuum to remove loose materials from surface.

Equipment: Apply w dry rayon string or micro fiber mop.

Storage and Handling: Store in cool dry place. Do not alter or mix with other chemicals.

Application: Always test for suitability and desired results before overall application. Pour into a clean bucket. Using a dry mop apply 1-4 coats of finish. To achieve a thin, even coat, move the mop in continuous figure eight motion. Allow floor to dry completely between coats to prevent hazing and to ensure adhesion. Approximately 30 minutes under normal conditions. Do not use fans to reduce drying time. Maintain floor by frequent dry dust mopping and daily damp mopping with Riverbed Concrete General Cleaner to provide a long lasting, clear gloss finish. To periodically rejuvenate the gloss, spray buff floor while using a low speed buffing machine with a red pad, or a high speed burnisher with a natural or beige pad.

Safety Info: Contains Glycol Ethers. Harmful if swallowed. Avoid eye and skin contact. Wear protective equipment as necessary to avoid contact. Do not alter or use for other than specified. **First Aid:** Ingestion: do not induce vomiting. Get immediate medical assistance. Eye Contact: Rinse thoroughly for 15 min. Get medical assistance. Skin contact: Rinse thoroughly. Get medical attention if irritation persists. Inhalation: Remove to fresh air. Get medical attention as necessary. 24 Hour emergency: INFOTRAC, 800.535.5053. Complete product literature by Riverbed Concrete Inc. 830.981.2210. Refer to product data and MSDS for complete application and precautionary information.

General Cleaner

Riverbed Concrete General Cleaner is an all purpose cleaner for polished concrete flooring, stain and seal concrete flooring, concrete counters/sinks/tiles, and other pre-cast concrete features. It's neutral formula contains low residue, which rinses clean and is specifically designed for use on decorative concrete surfaces.



Instructions for Use:

Preperation: Sweep or vacuum to remove loose materials from surface.

Equipment: Apply w mop, autoscrubber, or rag.

Storage and Handling: Store in cool dry place. Do not alter or mix with othere chemicals.

Application: Always test for suitability, dilution rates and desired results before overall application. Dilution: Normal clean-1oz of cleaner/1gal fresh water ; Deep clean-2oz of cleaner/1gal fresh water.

Application Instruction: Apply with mop or autoscrubber. Mop up used cleaner or vacuum with autoscrubber. After deep clean rinse well with fresh water. Do not let puddles dry on the concrete surface. Buff with White pad to inccess shine.

Clean Up: Clean tools and equipment w fresh water.

Safety Info: Contains Octyldimethylamine oxide, decyldimethylamine oxide. Causes eye and skin irritation. Harmful if swallowed. Avoid eye and skin contact. Wear protective equipment as necissary to avoid contact. Do not alter or use for other than specified. **First Aid:** Ingestion: do not induce vomiting. Get immediate medical assistance. Eye Contact: Rinse thoroughly for 15 min. Get medical assistance. Skin contact: Rinse thoroughly. Get medical attention if irritation persists. Inhalation: Remove to fresh air. Get medical attention as necissary. 24 Hour emergency: INFOTRAC, 800.535.5053. Complete product literature by Riverbed Concrete Inc. 830.981.2210. Refer to product data and MSDS for complete application and precautinary information.

Flooring Comparison Chart

	COLORANTS			FINISHES	
	Acid Stain	SIM Stain	Dye	Topical Sealer	Diamond Polished
What is it?	Chemical stain to be used with topical sealer	Acrylic stain colorant to be used with topical sealer	Concrete flooring colorant to be used with either a topical sealer or diamond polished flooring	30% solids, clear acrylic sealer	Hardened / Densified concrete that is brought to a shine using diamond abrasives
How does it work?	Chemical reaction with hardened concrete which yields a color compound	Very small pigment which is absorbed into the concrete surface and bonded with acrylic	Ultra fine colorant which is completely absorbed into the concrete surface	Topical clear coating, which is used to protect and enhance the colored concrete surface	Mechanical polishing of the concrete surface creates a glossy shine. Flooring is sealed with a non topical sealer (protects from the inside out)
Where to use?	-Interior or Exterior (Green and Blue Interior only) -Residential or Commercial -New construction -Remodel	-Interior or Exterior -Residential or Commercial -New construction -Remodel	-Interior only -Residential or Commercial -New construction -Remodel	-Interior or Exterior -Residential or Commercial -New construction -Remodel	-Interior only -Residential or Commercial -New construction -Remodel
Benefits	Natural occurrence of color modeling. A perfect colorant for rusts and leather tones	Broad selection of color for the south Texas décor, often exhibiting dramatic color modeling and crazing	Our favorite colorant. Dyes provide more color control, and greater degree of color options	Richens and enhances the floor color. Provides a great deal of protection from permeable liquids	Extremely high traffic wear tolerance. Flooring exhibits a beautiful shine similar to that of polished stone
Colors	8 standard colors that range from tans and rusts, greens and blue-greens, and shades of black	A wide variety of subtle earth tones with 20 colors to choose from	A wide selection of mixable colors for almost unlimited options. Colors of note: tans-light browns, absolute black, bright-vivid	Clear sealer	Dyes are suggested, but other options are also available
Durability	N/A	N/A	N/A	Medium – High	Very High



RIVERBED CONCRETE INC
elements in decorative concrete

polished concrete flooring ■ stain and seal flooring ■ concrete counters ■ sinks ■ tiles

39390 W IH-10 Suite C Boerne Tx 78006
Phone: 830.981.2210
Fax: 830.755.6055
info@riverbedconcrete.com
www.riverbedconcrete.com

ACID STAIN

interior / exterior stain and seal



MALAY TAN



VINTAGE
UMBER



LAWN GREEN



AQUA BLUE



BLACK



GOLDEN
WHEAT



ENGLISH RED



COLA

SIM STAIN

interior / exterior stain and seal



ACCENT
BLACK



BRONZE



OLIVE



MAHAGONY



PERSIMMON



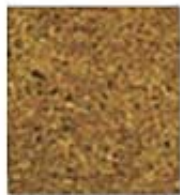
MOLASSIS

DYE (INTERIOR ONLY)

interior stain and seal / polished concrete



AZTEC GOLD



PHEONIX SUN



BURNT SUGAR



DESERT SAND



TERRA COTTA



SUMATRA



RIVER



BLACK



LEATHER



COCOA



NUTTY



SIENNA



BURGANDY



MOSS



KELLY



BLACK 50%